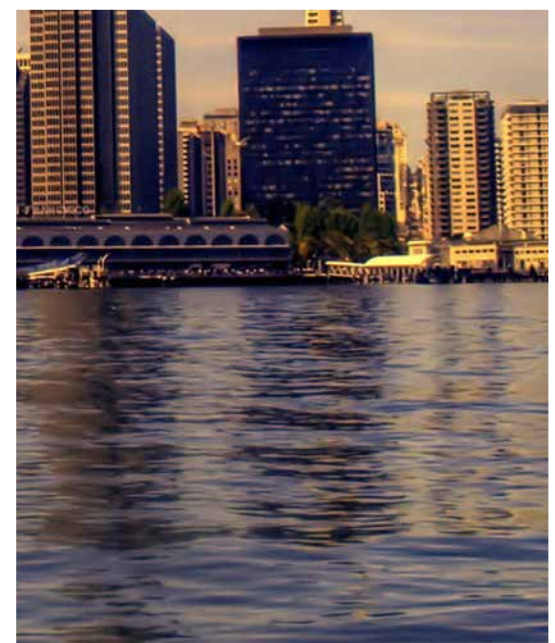


PHRONESIZ
BUILDING FACELIFT PEOPLE



PRODUCT RANGE:

**EXTERIOR LOUVERS:
U SHAPED BAFFEL MULTI
SHAPED/SL-4/SL-5/H-3/84-R
MATERIAL: GALVANIZED IRON**

Our Product Are Made Of Galvanized Steel, Aluminium And Stainless Steel With Coil Coated And Powder Coated Finish And Functional Utility

- Superb Aesthetics
- Recyclability – Green Product
- Better Acoustics
- Light Weight
- Washable – Water Resistive
- Ease Of Maintenance
- Corrosion Resistive
- Fire Retardant
- Clean Room Application
- Ultra Durable

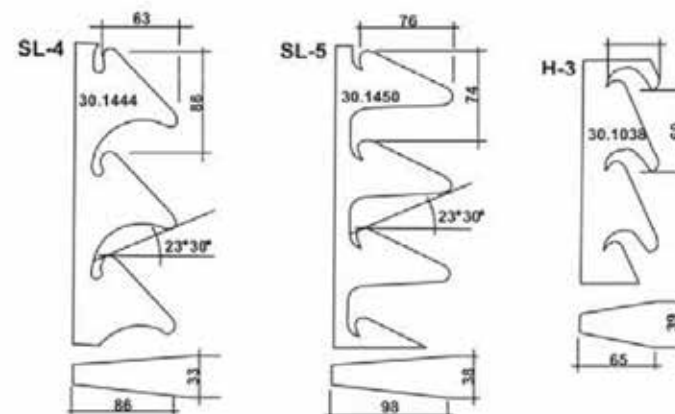


TYPES:

SL4/SL5/H3/84R

Our Product Are Made Of Galvanized Steel, Aluminium And Stainless Steel With Coil Coated And Powder Coated Finish And Functional Utility

- Superb Aesthetics
- Recyclability – Green Product
- Better Acoustics
- Light Weight
- Washable – Water Resistive
- Ease Of Maintenance
- Corrosion Resistive
- Fire Retardant
- Clean Room Application
- Ultra Durable



TECHNICAL SPECIFICATION:

PANES: 84mm wide, 16mm deep, length up to 5mtr. made of Galvanized Steel 0.55mm & 0.65mm Aluminum - TCT.

CARRIER: Various dimensions (SL-4 / S-5 / H-3) made of Galvanized Steel 0.6mm, Aluminum 0.91mm thick stove enameled / coil coated back.

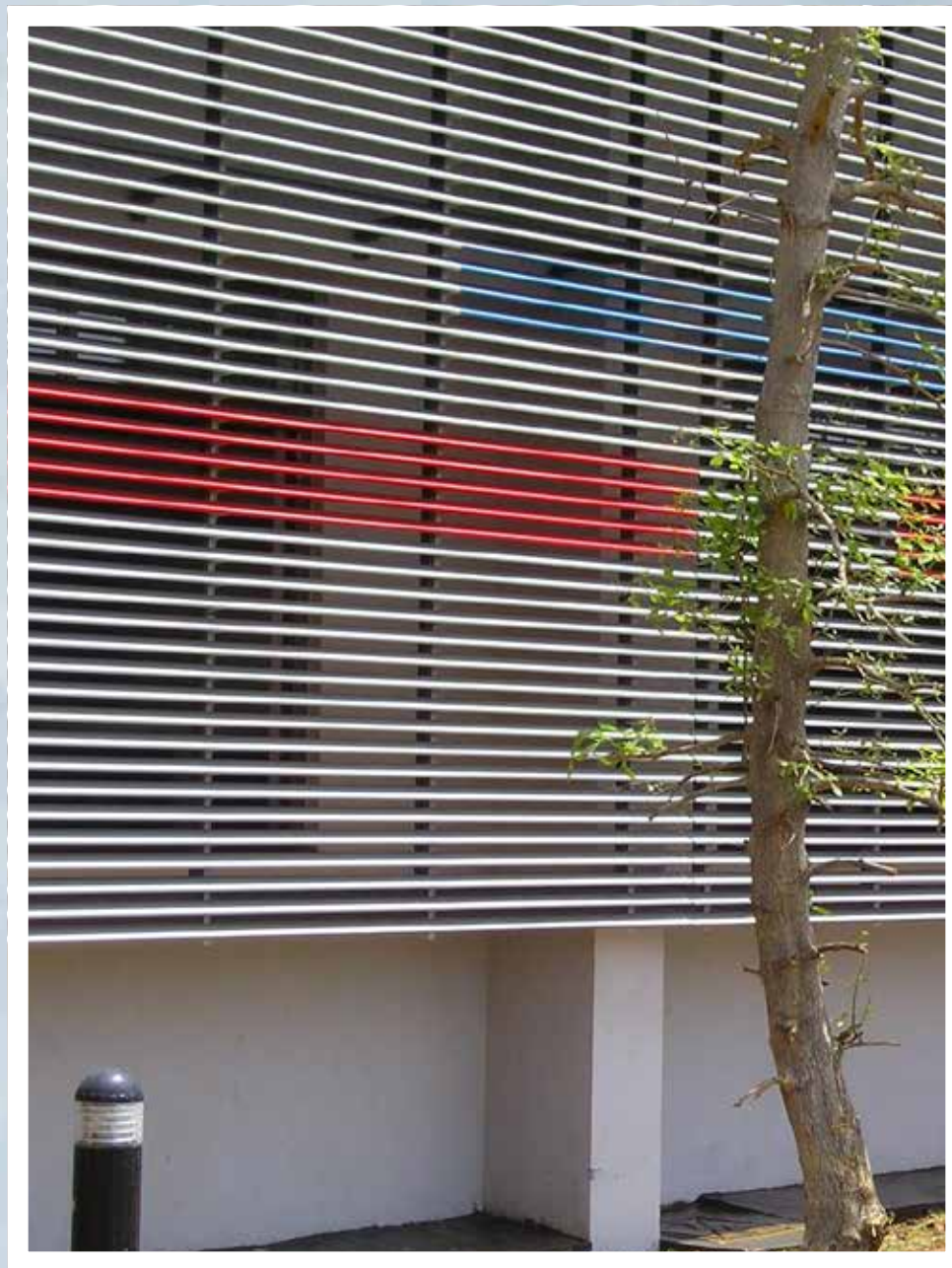
PAINT FINISH: Special high quality surface with Corrosion resistive Super Durable Powder coating, have properties capable of meeting the severe requirement of exterior applications, preferred with visible & rear both side powder coated.

INSTALLATIONS: L Clit. I Angle, Tubular stud Section, Corrosion & weather resistive screws and other components if required for structure.



SL4/SL5/H3

Phronesiz Slanted Louvres are highly innovative and gaining popularity in construction to cover the Ducts and used as a Ventilated facade system. The systems are easy and fast to install with variety of carriers with different Louvres inclination. Panels come with a special high quality powder coating finish.



U-SHAPED CLADDING



U-SHAPED BAFFLE LOUVERS

U-Shaped Box Louvres are an easily mounted and extremely versatile exterior cladding system, can be installed horizontally or vertically. U-Shaped Box is an economic but long-lasting solution for external cladding. Special unique powder coating finish on panel is not affected by dirt and humidity. Shapes, colors, materials, technology, Phronesiz truly offers endless choice.



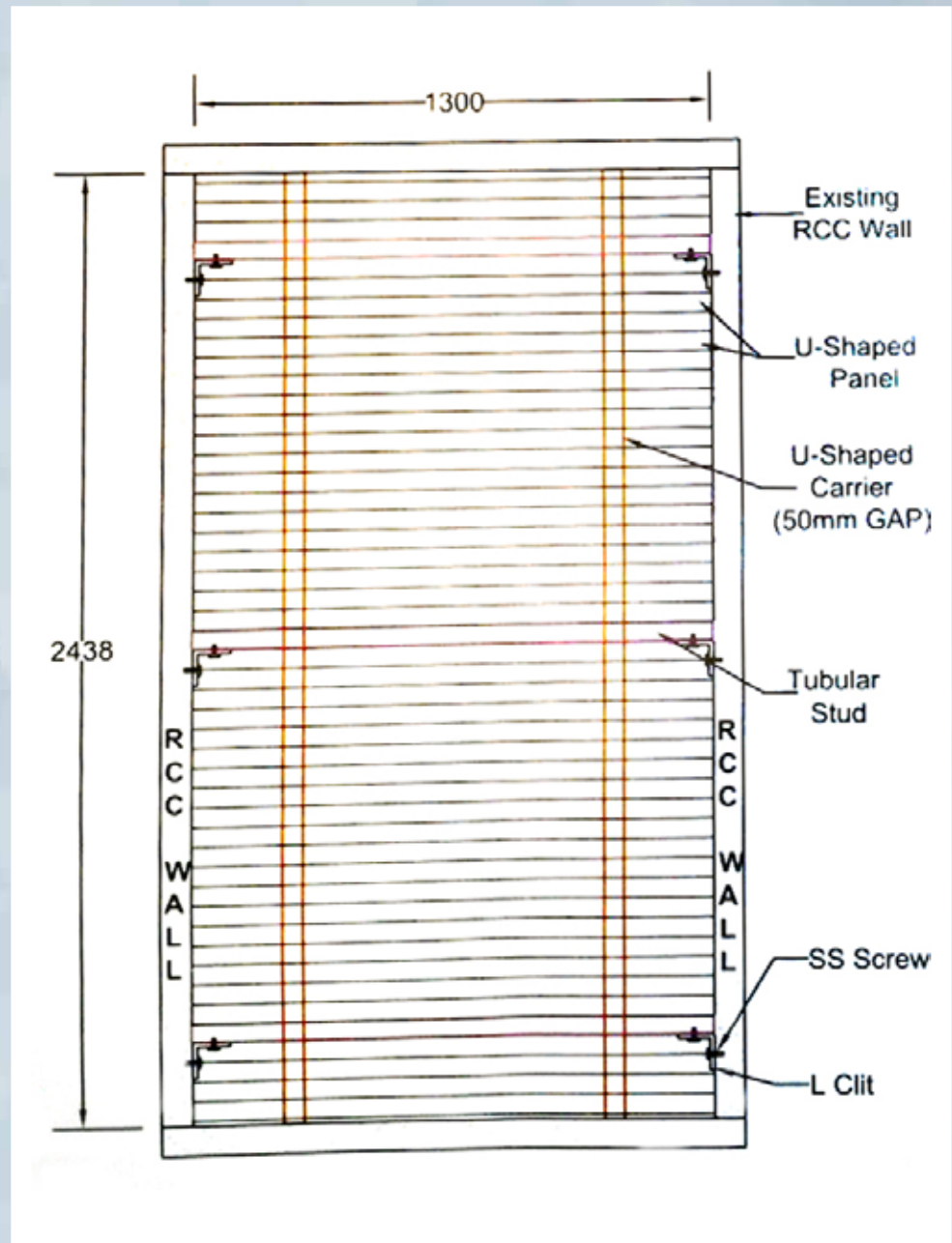
TECHNICAL DETAILS:

PANES: 50mm / 150mm / 125mm wide, length up to 3 mtr., Galvanized Steel 0.5mm & Aluminum 0.65mm – TCT.

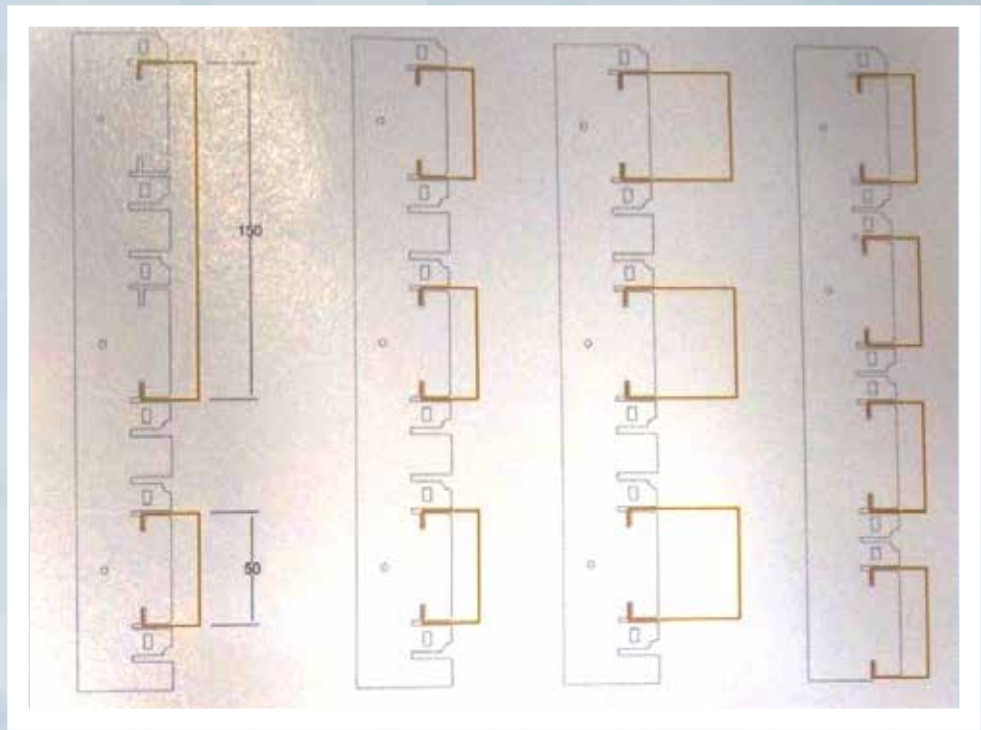
CARRIER: Various gap, 25mm / 50mm / 75mm / 100mm made of Galvanized Steel 0.6mm thick stove enameled/coil coated back.

PAINT FINISH: Special high quality surface with Corrosion resistive Super Durable Powder coating, have properties capable of meeting the severe requirement of exterior applications, preferred with visible & rear both side powder coated.

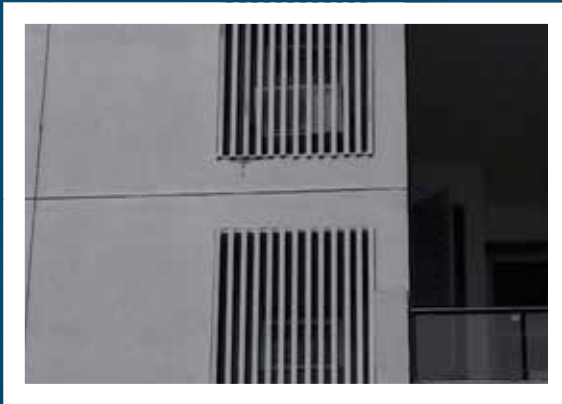
INSTALLATIONS: L Cit, L Angle, Tubular Stud Section, Corrosion & weather resistive screws and other components if required for structure.



U-SHAPED BAFFLE LOUVERS



PHRONESIZ LOUVRES PORTFOLIO:



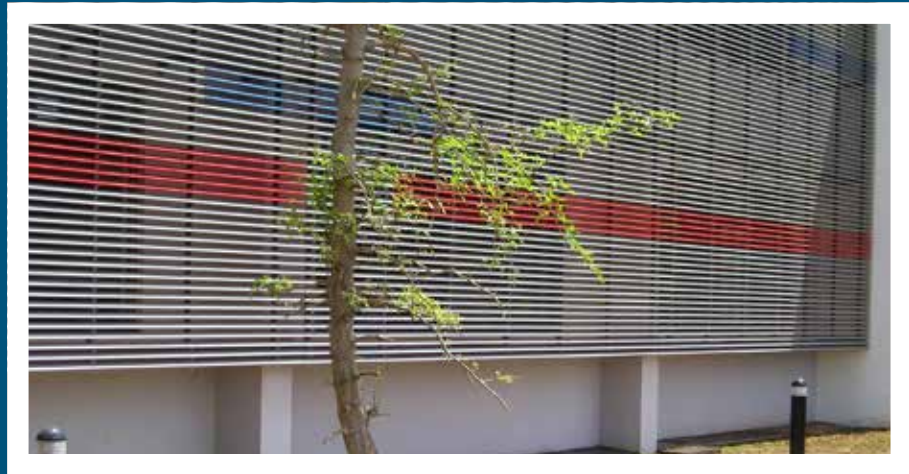
PHRONESIZ LOUVRES PORTFOLIO:



PHRONESIZ LOUVRES PORTFOLIO:



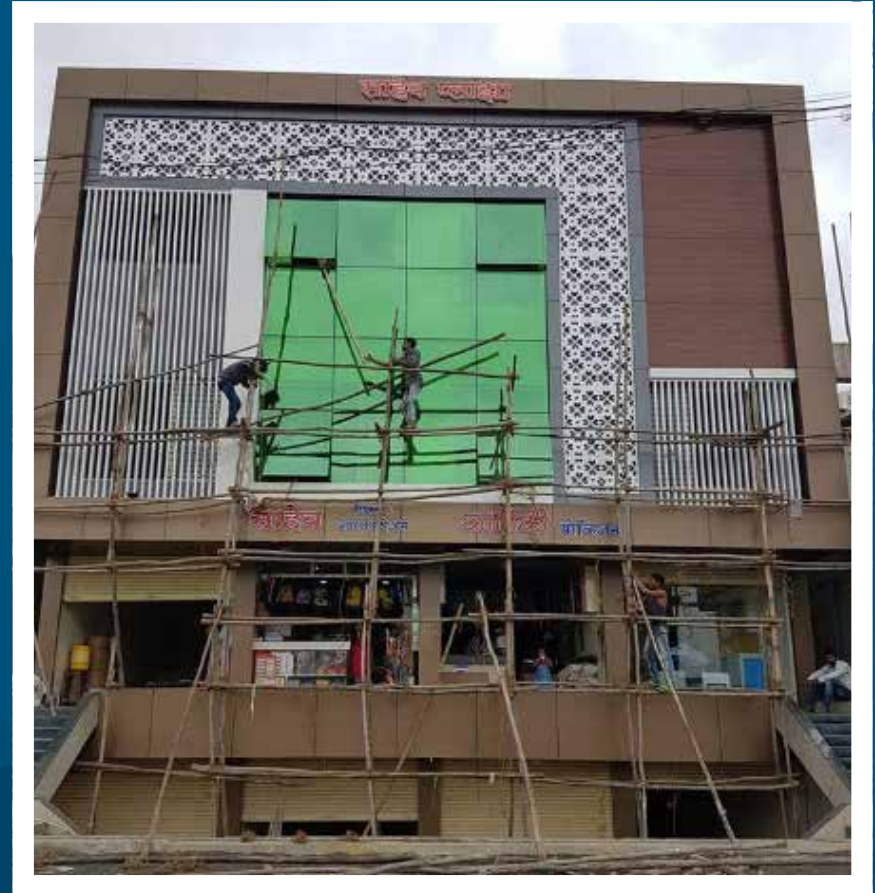
PHRONESIZ LOUVRES PORTFOLIO:



PHRONESIZ LOUVRES PORTFOLIO:



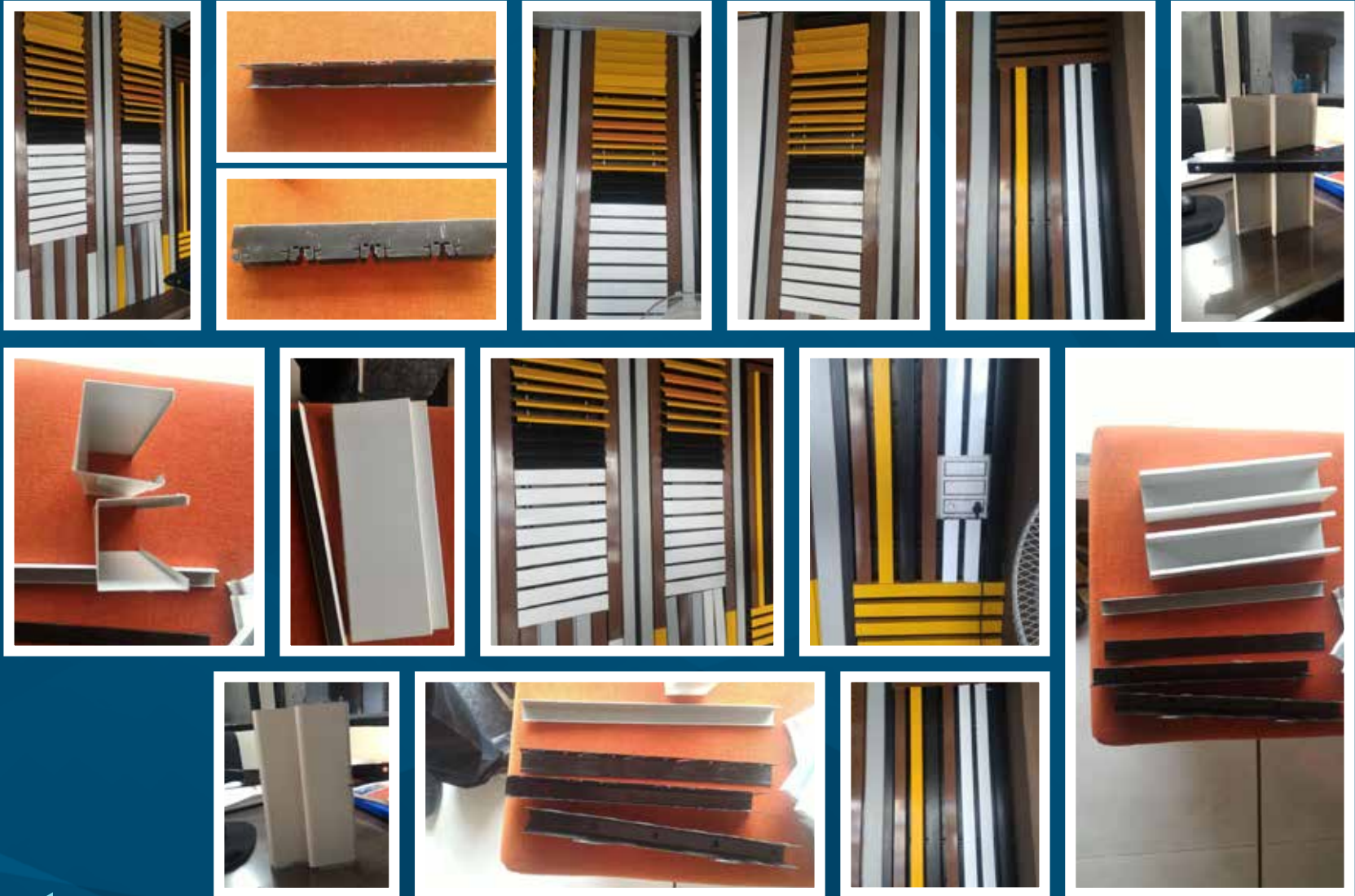
PHRONESIZ LOUVRES PORTFOLIO:



PHRONESIZ LOUVRES PORTFOLIO:



PHRONESIZ LOUVRES PORTFOLIO:





CONTACT:

SANTOSH KUNTE

santosh.k@phronesiz.com
9552633400

Pune Office

SATORI CONSULTING

15-16, Runwal Platinum,
Ramnagar Colony, NDA Road,
Bavdhan, Pune - 411 021
+91 9552633400

VIKAS KUNTE

vikas.k@phronesiz.com
9881999111

Factory

PHRONESIZ MARKETING VENTURES PVT. LTD.

F-24, Besides Taramati Bafana Andh Vidhyalaya,
Brijwadi Road, MIDC Chikalthana,
Aurangabad - 431 007
+91 9881999111

- Structural Glazing • Aluminum Composite Panels • Spider Gazing
- Aluminum Partitions • ETERNIA Aluminum System Windows
- Railing Systems • Wall Panels

Authorized
Franchisee
Fabricator for

